

Power-optimized motors

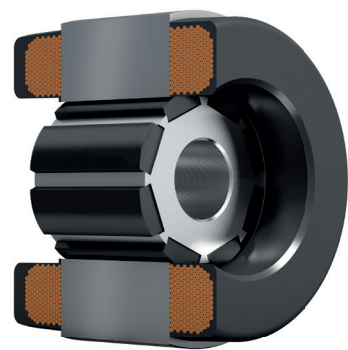
Stator outer diameter D [mm]	Length of laminated core L [mm]										Height of winding head		Hollow shaft H [mm]
	7	17	30	45	60	90	120	165	230	360	A [mm]	B [mm]	
019											2,5	2,5	3
028											4,8	5,8	4,5
038											7	10	6,2
049											9	13	10
064											11	15	12
094											15	20	12
130											23	25	31
155											28	32	35
178											30	34	37
220											38	40	100

Overall length = L + A + B

Nominal voltage
24 to 750V_{DC}

Outer diameter
19 to 220 mm

Efficient
Loss-optimized topology and use of special materials



Low
no. of pole pairs

Minimal
cogging torque

High
overload capacity

Potted
stator winding

